

ITEM #	DEVICE NAME	IND COLOR	STD	OPTIONAL
01	ENGINE OIL PSI GAUGE		X	
	LOW ENGINE OIL PSI IND	RED	X	
02	VOLTMETER		X	
	LOW/HIGH VOLTAGE IN	AMBER	X	
03	ENGINE COOLANT TEMP GAUGE		X	
	HIGH ENGINE COOLANT TEMP IND	RED	X	
04	TACHOMETER		X	
05	SPEEDOMETER		X	
06	TRANS OIL TEMP GAUGE		X	
	HIGH TRANS OIL TEMP IND	AMBER	X	
07	FRONT AIR PSI GAUGE		X	
	LOW FRONT AIR PSI IND	RED	X	
08	REAR AIR PSI GAUGE		X	
	LOW REAR AIR PSI IND	RED	X	
09	FUEL GAUGE		X	
	LOW FUEL LEVEL IND	AMBER	X	
10	DIESEL EXHAUST FLUID LEVEL GAUGE		X	
	LOW DIESEL EXHAUST FLUID LEVEL IND	AMBER	X	
11				
12				
13				
14				
15				
16	MULTIPLEX INDICATOR LIGHTS		X	
	LEFT DIRECTIONAL	GREEN	X	
	RIGHT DIRECTIONAL	GREEN	X	
	HIGH BEAM INDICATOR	BLUE	X	
	LOW COOLANT	AMBER	X	
	CHECK ENGINE	AMBER	X	
	AUX BRAKE OVERHEAT	AMBER	X	
	CAUTION	AMBER	X	
	WARNING	RED	X	
	PARK BRAKE APPLIED	RED	X	
	STOP ENGINE	RED	X	
	DPF REGENERATION	AMBER	X	
	ABS TRAILER FAULT	AMBER	X	
	GRID HEATER - WAIT TO START	AMBER	X	
	TRACTION CONTROL	AMBER	X	
	CHECK TRANSMISSION	AMBER	X	
	AIR RESTRICTION	AMBER	X	
	WATER IN FUEL	AMBER	X	
	FASTEN SEATBELTS	RED	X	
	RACK DOWN	RED	X	
	ENGINE HIGH EXHAUST TEMP	AMBER	X	
	ABS TRACTOR FAULT	AMBER	X	
	EMISSION SYSTEM MALFUNCTION	AMBER	X	
17	LEFT HARDWIRED INDICATOR LIGHT BANK		X	
	SIDE ROLL FAULT	AMBER	X	
	FRONTAL AIR BAG FAULT	AMBER	X	
	BATTERY SYSTEM ON	GREEN	X	
	SRS FAULT	AMBER	X	
18	RIGHT HARDWIRED INDICATOR LIGHT BANK		X	
	DPF DIESEL EXHAUST FLUID LEVEL	AMBER	X	
	LOW DIESEL EXHAUST FLUID LEVEL	AMBER	X	
	GRID HEATER - WAIT TO START (CUMMINS)	AMBER	X	
	EMISSION SYSTEM MALFUNCTION	AMBER	X	
19	LCD DISPLAY ON GAUGE ASSEMBLY		X	
	ODOMETER - MILE/KM		X	
	TRIP ODOMETER - MILES/KM		X	
	OUTSIDE AIR TEMP - F/C		X	
	PTO A HOURS		X	
	PTO B HOURS			
	ENGINE HOURS			
20	LCD MULTI-FUNCTION CONTROL			
21				
22				
23				
24				
25				
26	IGNITION / ALARM SILENCE SWITCH AND IGN IND	GREEN	X	
27	START SWITCH		X	
28				
29	HEADLIGHT/PARKLIGHT SWITCH		X	
30	DIMMER CONTROL		X	
31	HIGH IDLE SWITCH/IND	GREEN	X	
32	OK HIGH IDLE IND	GREEN	X	
33	EMERGENCY MASTER E-M BUTTON/IND	GREEN	X	
34				

ITEM #	DEVICE NAME	IND COLOR	STD	OPTIONAL
35				
36				
37				
38				
39	DIRECTIONAL SWITCH		X	
40	HEADLIGHT HI/LOW BEAM SWITCH		X	
41	WIPER CONTROL SWITCH		X	
42	WASHER CONTROL SWITCH		X	
43	4-WAY HAZARD SWITCH		X	
44	TELMA HAND CONTROL			
45				
46				
47				
48				
49	BATTERY SWITCH		X	
50	DIAGNOSTICS PANEL		X	
A	BLANK		X	
B	ABS DIAG SWITCH/IND	AMBER	X	
C	DPF REGEN SWITCH/IND	AMBER	X	
D	ENGINE DIAG SWITCH/IND (CUMMINS)	RED	X	
E	ENGINE DIAG IND (DETROIT DD13)	RED	X	
F	DPF REGEN INHINIT SWITCH/IND	GREEN	X	
G	TECH MODULE DIAG PORT		X	
H	ENG/TRANS/ABS J1939 DIAG PORT		X	
	DISPLAY PORT			
52				
53				
54				
55				
56	ALARM 1		X	
57	ALARM 2			
58	DOOR OPEN ALARM - CHIME TONE			
59	CAMERA SPEAKER			
60				
61				
62				
63				
64				
65	PARK BRAKE W/ U-BOLT GUARD		X	
66	INTERAXLE DIFFERENTIAL LOCK/IND	RED		
67	EMERGENCY SHUTDOWN			
68	TILLER JACKNIFE WARNING LIGHT	RED		
69	VERNIER THROTTLE			
70				
71				
72				
73				
74				
75				
76	CAMERA DISPLAY			
77	TIRE PRESSURE MONITORING SYSTEM DISPLAY			
78	COMMAND ZONE SYSTEM DISPLAY		X	
79				
80	SEAT BELT MONITORING SYSTEM DISPLAY		X	
81	PUC SYSTEM DISPLAY PANEL			
	DIGITAL PUMP PRESSURE			
	WATER TANK LEVEL			
	FOAM LEVEL A			
	FOAM LEVEL B			
82				
83				
84				
85				
86				
87	SHIFT SELECTOR		X	
	SHIFT INDICATOR		X	
88	AIR SHIFT PUMP CONTROL			X
	OK TO PUMP IND	GREEN		X
	PUMP ENGAGED IND	GREEN		X
89	PUC PUMP CONTROL			
90				
91				
92				
93				

A1

REVISION HISTORY						
ZONE	REV	DESCRIPTION	CN	DATE	PREP	APVD
C6	A1	ADDED H	80090087	2016/09/09	P03609	P00504
A1	B1	ADD ITEMS 153 & 154	80135971	2019/12/20	P00504	248441

ITEM #	DEVICE NAME	IND COLOR	STD	OPTIONAL
94				
95	DEFROST CONTROLS		X	
96	HEATER CONTROLS		X	
97	AIR CONDITIONING CONTROLS		X	
98	MIRROR REMOTE		X	
99	ELECTRONIC SIREN		X	
100	WINDOW DEFROST FANS			
101	VEHICLE DATA RECORDER PORT		X	
102	CUSTOMER SUPPLIED RADIO		X	
103	INTERCOM		X	
104				
105				
106				
107				
108	AMMETER			
109	DUAL AMMETER			
110	PUMP HOUR METER			
111	ENGINE OIL TEMP GAUGE			
112	AIR RESTRICTION GAUGE			
113	RETARDED PSI GAUGE			
114	PUMP TRANSFER ACSE TEMP GAUGE			
115	TURBO TEMP GAUGE			
116	TRANSMISSION OIL PSI GAUGE			
117	EXHAUST TEMP GAUGE			
118	OFFICER SIDE SPEEDOMETER			
119				
120	HAAS ALERT		X	
121				
122				
123				
124	SIREN BRAKE PUSHBUTTON			
125	ELECTRONIC SIRE PUSHBUTTON			
126	AIRHORN PUSHBUTTON			
127	MECHANICAL SIREN PUSHBUTTON			
128	AIRHORN LANYARD			
129	DIGITAL CLOCK			
130	AM/FM RADIO		X	
131	TRAFFIC ADVISOR			
132	POWER POINT		X	
133	MINI FIVE-LT WATER TANK IND LTS			
134	MAP LIGHT			
135	HANDHELD SPOTLIGHT			
136	GOLIGHT CONTROL			
137	TEMLA HAND CONTROL			
138	RACO INDICATOR			
139	STORAGE POCKET			
140	USB PWR POINT			
141				
142				
143				
144				
145	RETARDER WARNING TAG			
146	TIRE CHAINS WARNING TAG		X	
147	1, 2, 3 BUZZER TAG			
148				
149	TRACTION CONTROL SYSTEM EQUIPPED TAG		X	
150	GENERATOR RPM TAG		X	
151	ROLL STABILITY CONTROL EQUIPPED TAG		X	
152	ULTRA LOW SULFUR DIESEL LABEL		X	
153	BLANK COVER PANEL		X	
154	STORAGE POCKET			
155				
156				

B1

NOTES:
 1) ITEMS MARKED WITH AN "X" WILL BE PROVIDED. ITEMS NOT MARKED WILL NOT BE PROVIDED.
 2) REFERENCE INSTRUMENT PANEL LAYOUT 66-0241SH1.


COMMERCIAL (EAR99)

THIS DRAWING IS SUBJECT TO THE EXPORT ADMINISTRATION REGULATIONS. YOU MAY NOT PROVIDE IT TO ANY PROHIBITED END-USERS OR FOR ANY PROHIBITED END-USES AS SET FORTH IN THE U. S. EXPORT CONTROLS.

THIS DRAWING IS PROVIDED ON A CONFIDENTIAL BASIS SUBJECT TO THE RETURN ON DEMANDS BY PIERCE MANUFACTURING INC. ("PIERCE"), WHICH RETAINS ANY AND ALL RIGHTS ASSOCIATED WITH IT AND THE ARTICLE OR ARTICLES IT REPRESENTS. DISCLOSURE, REPRODUCTIONS OR ALTERATIONS OF ANY PART OF THIS DRAWING: OR MANUFACTURE, USE OR SALE OF THE ARTICLE OR ARTICLES REPRESENTED, IS PROHIBITED WITHOUT THE PRIOR WRITTEN AUTHORIZATION OF PIERCE. PIERCE MANUFACTURING INC. (UNPUBLISHED).

JOB #: 38387
SPECIAL LAYOUT BY: STEPHEN HARRIS

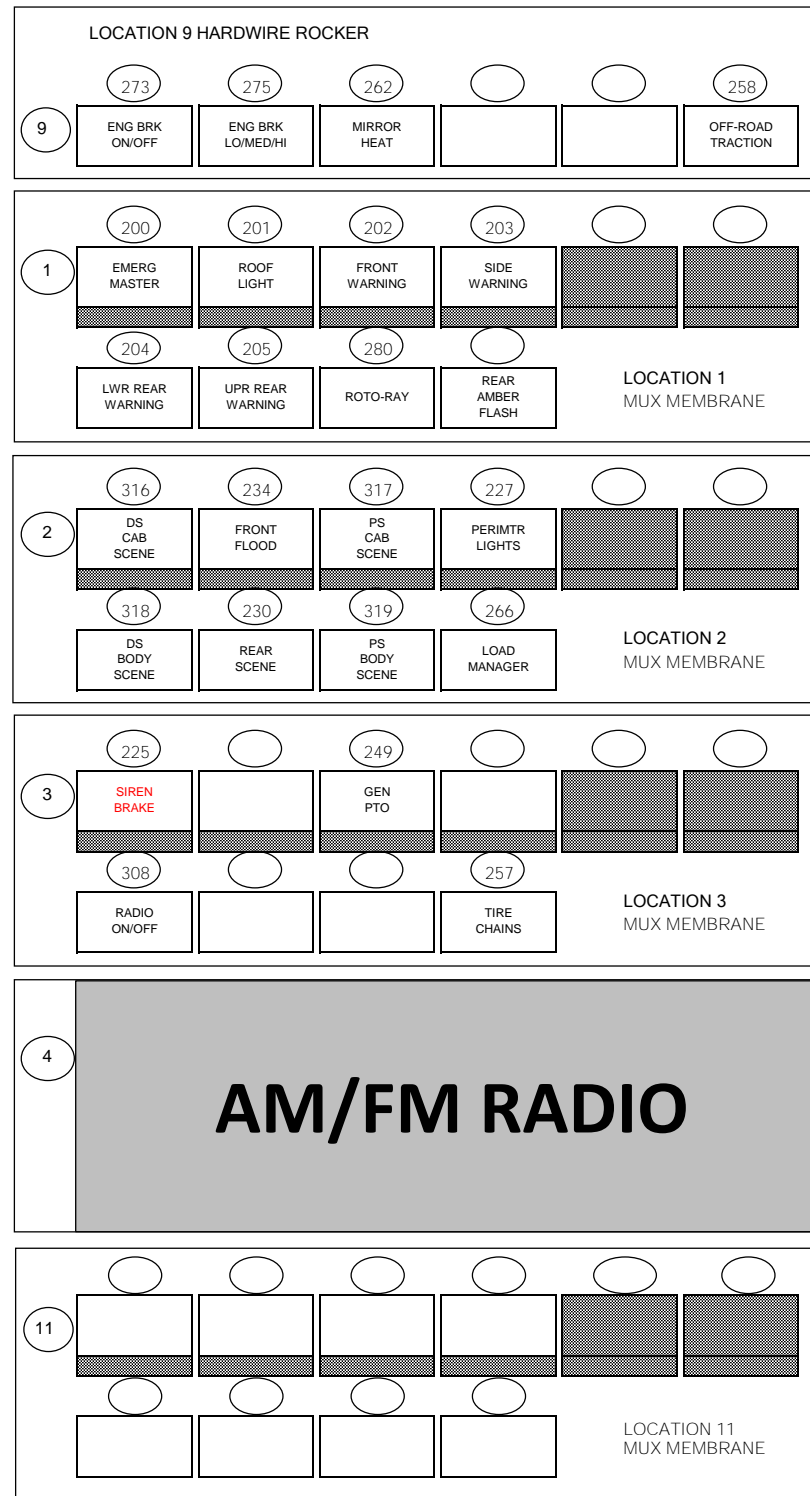
ON: 2-8-24

REFERENCE: SM	APPROVALS	USER ID	DATE	 PIERCE MANUFACTURING APPLETON, WI 54912 USA LAYOUT, INST PNL, SAB FR, ENF, IVZ
ALL DIMENSIONS IN INCHES UNLESS OTHERWISE NOTED	PREPARED	P216383	2015/05/12	
TOLERANCE UNLESS NOTED	APPROVED	P00504	2015/05/12	
2 PLACES ±0.06 3 PLACES ±0.015 ANGULAR ±1.0°	MFG ENG			
CONTRACT NO.	CN	80069459	CATIA V5R25	SIZE CAGE NO. D 04664
	MIN: N/A			DWG NO. 66-0241SH2
	FINISH: N/A			REV B
MATERIAL:				SCALE 1:1 WEIGHT SHEET 01 OF 01

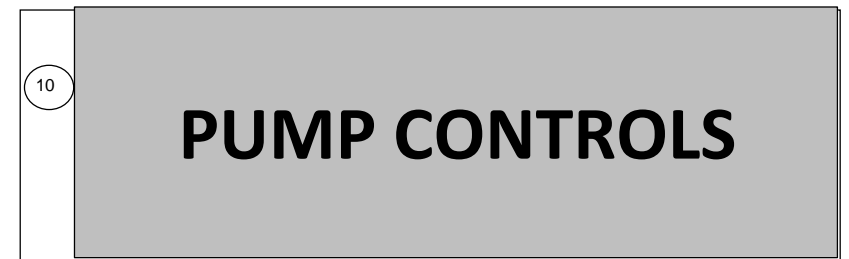
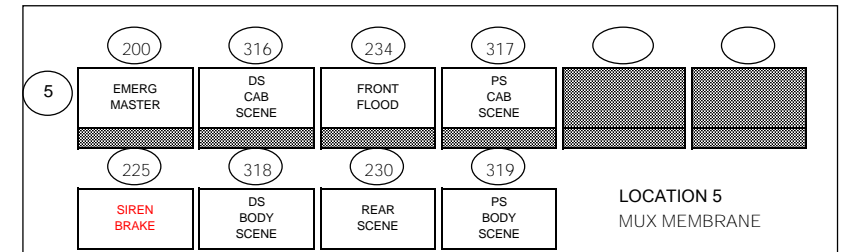
MUX ROCKER OR MUX	HARDWARE ROCKER SWITCH	IND LT ONLY	DEVICE
XX			200 Emergency Master
X			201 Roof Light
X			202 Front Warning
X			203 Side Warning
X			204 Lower Rear Warning
X			205 Upper Rear Warning
			206 High Beam Flash (Wig Wag)
			207 Opticom
			208 Intersector Lights
			209 CLEAR MASTER
			210 Rear Warning
			211 Side Roof Lights
			212 Rear Roof Lights
			213 Front Flash
			214 Side Flash
			215 Rear Flash
			216 Front & Rear Flash
			217 Front Strobe
			218 Side Strobe
			219 Rear Strobe
			220 Strobe Indicators (Hardware)
			221 Clear Roof
X			222 Electronic Siren
			223 Air Horn
LOW			224 Mech Siren
			225 Siren Brake
X			226 Front Wheel Lock
			227 Perimeter Lights
			228 Drivers Scene
			229 Pass Scene
XX			230 Rear Scene
			231 Side Scene
			232 Drivers Flood
			233 Pass Flood
XX			234 Front Flood
			235 Rear Flood
			236 Drivers Alley
			237 Pass Alley
			238 Fog Lights
			239 Deck Lights
			240
			241 Compartment Master
			242 Aerial Master
			243 Platform Level
			244 Leveling Activated (Mux)
			245 Stabilizer Not Stowed (Mux)
			246 Aerial PTO
			247 Aerial PTO Engaged (Mux)
			248 PTO
X			249 Generator PTO
			250 Generator PTO Engaged (Mux)
			251 Generator Preheat
			252 Generator Start/Stop
			253 Generator Power On (Mux)
			254 Generator On/Off
			255 Generator Running (Mux)
			256 120V Inverter
X			257 Tire Chains - (Hold for 3 Seconds)
	X		258 OFF-Road Traction
			259 Fuel Primer
			260 Auto Lube Fault (Mux)
			261
	X		262 Mirror Heat
			263
			264
			265
X			266 Load Manager
			267 CORNERING LIGHTS
			268
			269 Blank
			270 Retarder On/Off
			271 Retarder Auto Apply
			272 Extarder On/Off
	X		273 Engine Brake on/off
			274 Engine Brake Lo/High
	X		275 Engine Brake Lo/Med/High
			276
			277
			278
			279
X			280 ROTO RAY
			281 HOWLER ON
			282 HOWLER OFF
			283
			284
			285
			286
			287

MUX ROCKER OR MUX	HARDWARE ROCKER SWITCH	IND LT ONLY	DEVICE
			288
			289
			290 OK To Pump Ind- Stationary/Rolling
			291 Water Pump - PUC
			292 Foam System - PUC
			293 Cabs System - PUC
			294 Pump And Roll - PUC
			295 TTP Valve Ind - Open/Closed - PUC
			296
			297 Water Level
			298
			299
			300 FRONT FLOOD MASTER
			301 FRONT SPOT BEAM
			302 FRONT NARROW FLOOD
			303 FRONT WIDE FLOOD
			304
			305 Steady Red
			306 Differential Lock (Mux)
			307
X			308 RADIO ON/OFF
			309
			310 TRAFFIC CENTER
			311 TRAFFIC LEFT
			312 TRAFFIC RIGHT
			313 TRAFFIC WARNING
			314 TRAFFIC DIM
			315 Rear Ground Scene
XX			316 DS Cab Scene
XX			317 PS Cab Scene
XX			318 DS Body Scene
XX			319 PS Body Scene
			320 Cab Scene
			321 Rear Work Light
			322 Body Scene
			323 DS Cab Flood
			324 PS Cab Flood
			325 DS Body Flood
			326 PS Body Flood
			327 Cab Flood
			328 Body Flood
			329
			330 DS CORNERING LIGHT
			331 PS CORNERING LIGHT
			332
			333
			334
			335
			336
			337
			338
			339
			340
			341
			342
			343
			344
			345
			346
			347
			348
			349
			350

- NOTES:
 1. AN (X) IN A DEVICE ROW INDICATES THAT DEVICE WILL BE PROVIDED.
 2. BLACKED OUT AREAS INDICATE UNAVAILABLE SWITCH TYPE OR INDICATOR LIGHT FOR THE CORRESPONDING DEVICE.
 3. REFERENCE INSTRUMENT PANEL LAYOUT 66-0241SH1 FOR PANEL LOCATIONS.
 4. HARDWIRE PANELS ACCEPT ONE LABEL THAT COVERS SIX SWITCHES. EACH SWITCH POSITION CAN ACCEPT THREE LINES OF TEXT AND TEN CHARACTERS PER LINE.
 5. MUX MEMBRANE PANELS ACCEPT ONE LABEL PER SWITCH. EACH SWITCH POSITION CAN ACCEPT THREE LINES OF TEXT AND NINE CHARACTERS PER LINE.
 6. MUX ROCKER PANELS ACCEPT ONE LABEL THAT COVERS SIX SWITCHES. EACH SWITCH POSITION CAN ACCEPT THREE LINES OF TEXT AND NINE CHARACTERS PER LINE.
 7. THE DEFAULT INSERT TYPE AND INDICATOR COLOR WILL BE SHOWN FOR MUX ROCKER PANELS, HOWEVER THIS MAY BE CHANGED PER CUSTOMER PREFERENCE TO ANY TYPE LISTED ON PRINT 63-4678.



ATTENTION GRAPHICS DEPT:
 HARDWIRE ROCKER LABEL SPECS - SEE 1425370
 MUX ROCKER LABEL SPECS - SEE 1871898
 MUX MEMBRANE LABEL SPECS - SEE 1425370



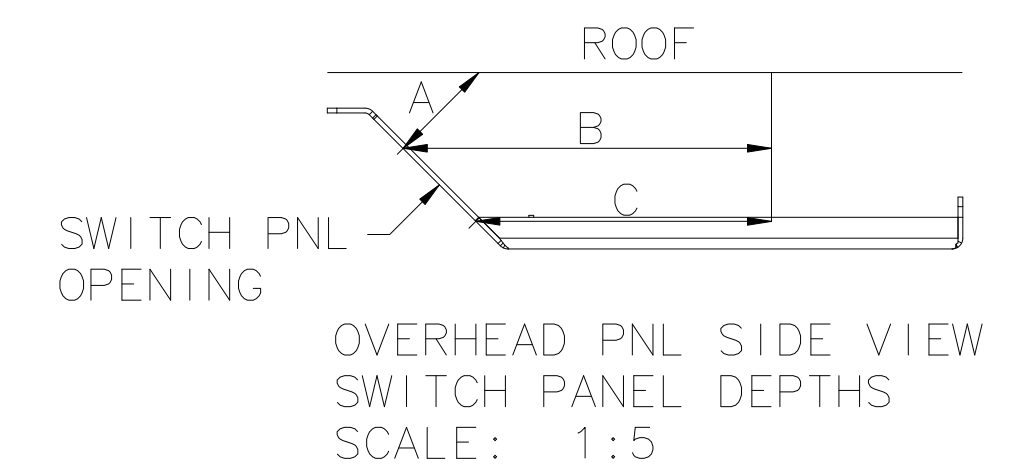
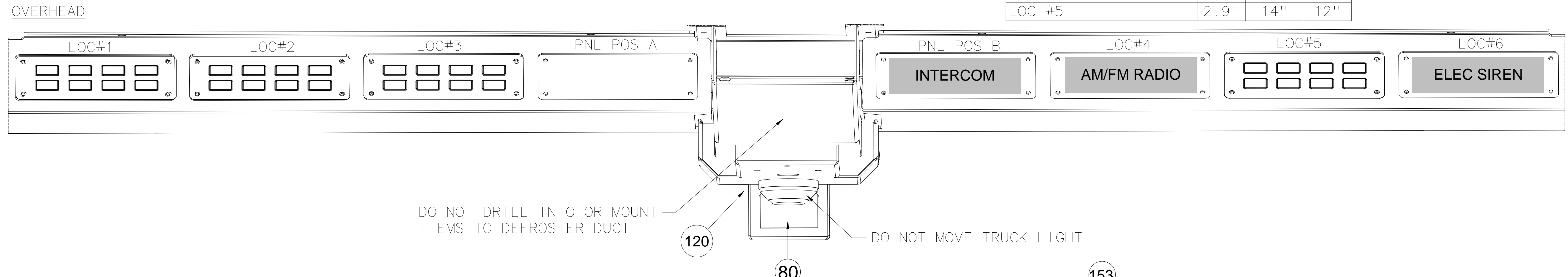
CUSTOMER SIGNATURE _____ DATE: ____/____/____

JOB: # 38387 SPECIAL LAYOUT: STEPHEN HARRIS DATE: 2-15-24

REF	SM,ROCKER/MEMBRANE SWITCHES	FSCM NO. O4664	DATE							
	Manufacturing Inc. Appleton, Wisconsin	DRAWN NKR	05OCT15	REV		DESCRIPTION	ECN	DATE	BY	CH
	THIS PRINT IS LOANED ON A CONFIDENTIAL BASIS SUBJECT TO RETURN UPON DEMAND BY PIERCE MFG INC AND NOTHING HEREIN MAY BE REPRODUCED, USED OR DISCLOSED IN WHOLE OR IN PART WITHOUT THE PRIOR WRITTEN PERMISSION OF PIERCE MFG INC.	CHECKED TMA	05OCT15	APPROVED JPR	05OCT15	TITLE				
						LAYOUT, INST PNL, SAB FR/ENF				
						66-0241SH3			SIZE B	SHEET NO. 1 OF 1

SWITCH PANEL DEPTHS	A	B	C
LOC #1 & #6	2.9"	5.7"	3.8"
LOC #2, #3, PNL POS A	2.9"	8.5"	6.6"
PNL POS B & LOC #4	2.9"	8.25"	6.4"
LOC #5	2.9"	14"	12"

REVISION HISTORY						
ZONE	REV	DESCRIPTION	CN	DATE	PREP	APVD

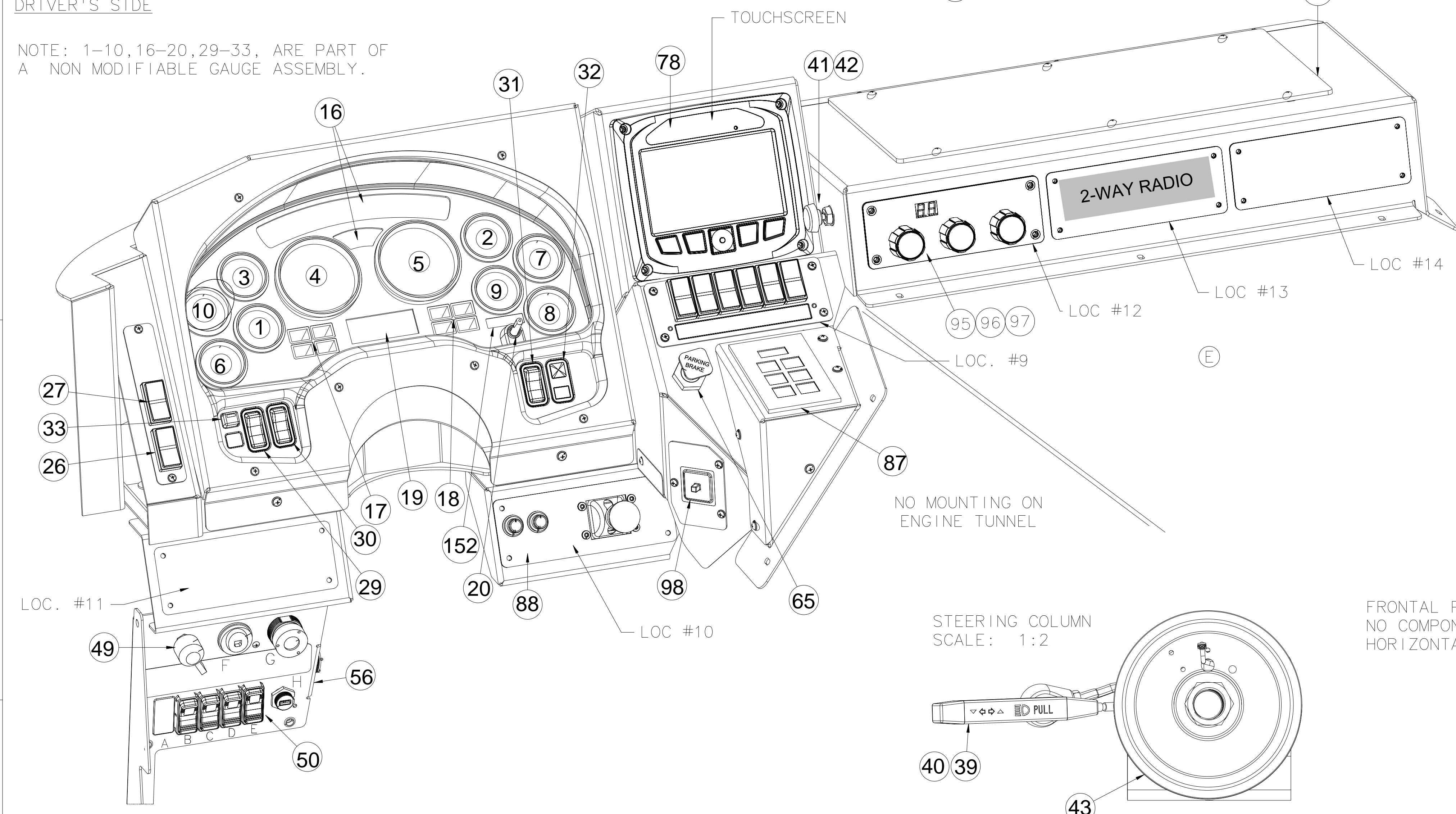


DO NOT DRILL INTO OR MOUNT ITEMS TO DEFROSTER DUCT

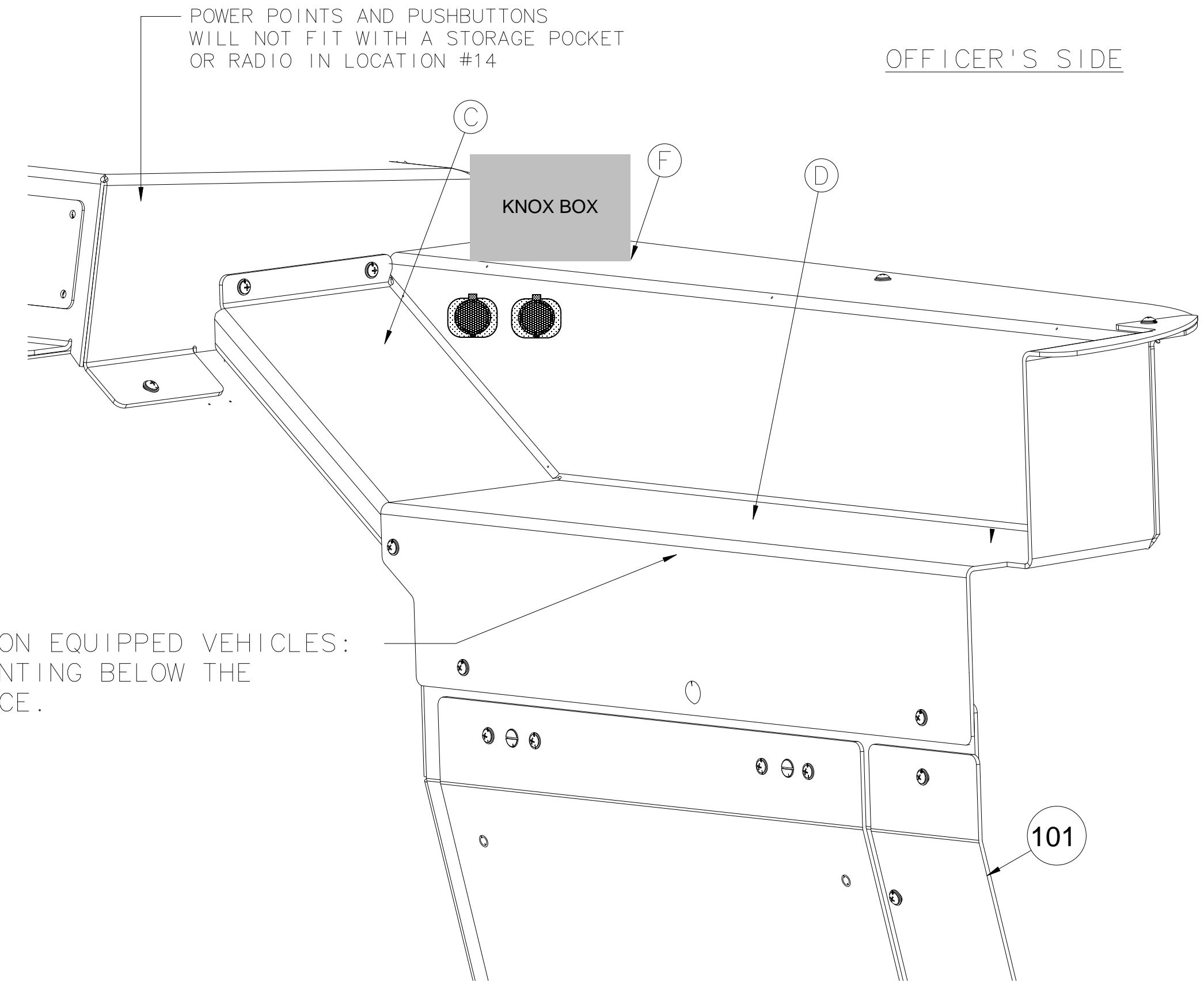
DO NOT MOVE TRUCK LIGHT

DRIVER'S SIDE

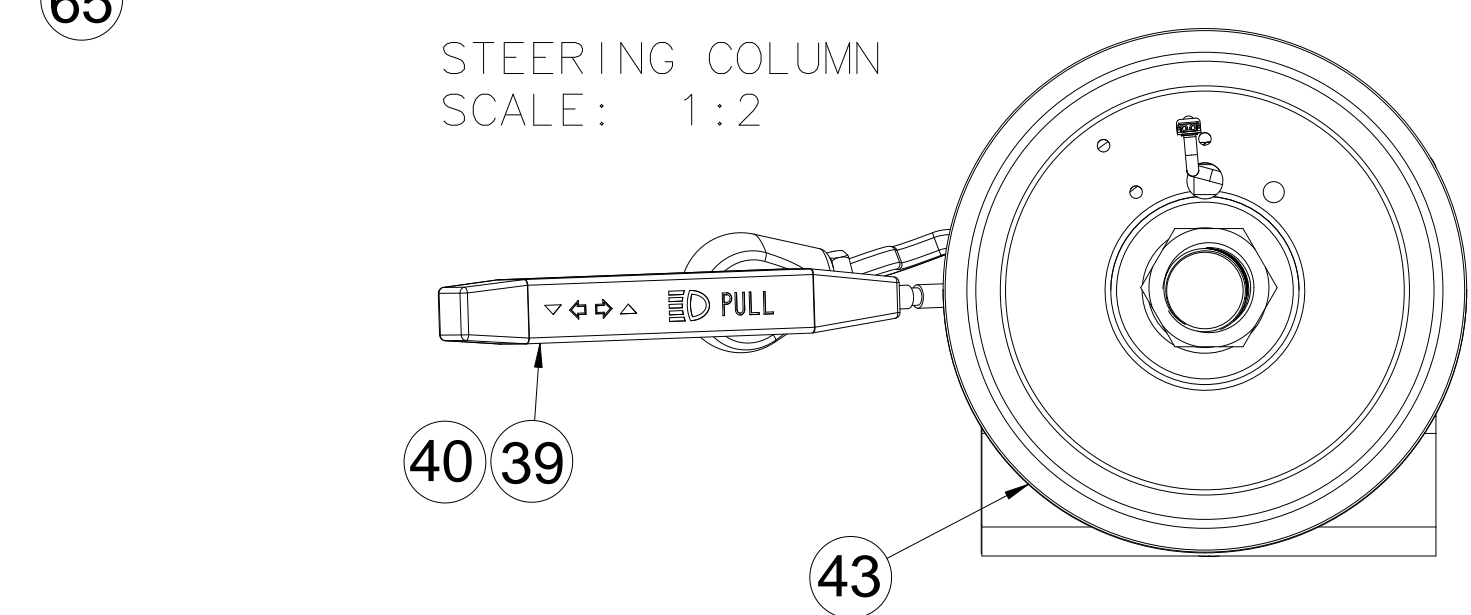
NOTE: 1-10, 16-20, 29-33, ARE PART OF A NON MODIFIABLE GAUGE ASSEMBLY.



REFERENCE	APPROX. DIMENSIONS
LOC#1-11	3.0" X 8.0"
PNL POS A	3.0" X 8.0"
PNL POS B	3.0" X 8.0"
C	8.31" X 5.90"
D	24.65" X 6.63"
E	25.18" X 21.08"
F	5.00" X 30.38"



- NOTES:
- REFERENCE SHEET 66-0241SH2 FOR COMPONENT LIST.
 - REFERENCE SHEET 66-0241SH3 FOR INDIVIDUAL SWITCH ASSIGNMENTS.
 - SYMBOLS ARE FOR LOCATION REFERENCE ONLY. ACTUAL COMPONENT APPEARANCE MAY VARY.
 - ONLY COMPONENTS REPRESENTED BY SOLID BUBBLES WILL BE PROVIDED AS STANDARD.



FRONTAL PROTECTION EQUIPPED VEHICLES:
NO COMPONENT MOUNTING BELOW THE HORIZONTAL SURFACE.

JOB #: 38387 SPECIAL LAYOUT BY: STEPHEN HARRIS DATE: 2-8-24

COMMERCIAL (EAR99)

THIS DRAWING IS SUBJECT TO THE EXPORT ADMINISTRATION REGULATIONS. YOU MAY NOT PROVIDE IT TO ANY PROHIBITED END-USERS OR FOR ANY PROHIBITED END-USES AS SET FORTH IN U.S. EXPORT CONTROLS.

THIS DRAWING IS PROVIDED ON A CONFIDENTIAL BASIS SUBJECT TO RETURN ON DEMAND BY PIERCE MANUFACTURING INC. ("PIERCE"), WHICH RETAINS ANY AND ALL RIGHTS ASSOCIATED WITH IT AND THE ARTICLE OR ARTICLES IT REPRESENTS. DISCLOSURE, REPRODUCTION OR ALTERATION OF ANY PART OF THIS DRAWING, OR MANUFACTURE, USE OR SALE OF THE ARTICLE OR ARTICLES REPRESENTED, IS PROHIBITED WITHOUT THE PRIOR WRITTEN AUTHORIZATION OF PIERCE. ©PIERCE MANUFACTURING INC. (unpublished).

REFERENCE: SM, OHD, METAL DASH	APPROVALS	USER ID	DATE	<p>PIERCE MANUFACTURING APPLETON, WI 54912 USA</p> <p>TITLE LAYOUT, INST PNL, SAB FR ENF</p>
ALL DIMENSIONS IN INCHES UNLESS OTHERWISE NOTED	PREPARED	P00504		
TOLERANCE UNLESS NOTED 2 PLACES ±0.06 3 PLACES ±0.015 ANGULAR ±1.0°	APPROVED	248441	2021/05/17	
CONTRACT NO.	MFG ENG			
MATERIAL: SEE DETAILS	CN	80153606	CAT1A V5R29	SIZE CAGE NO. ID 04664
	MIN: N/A			DWG NO. 66-0241SH6
	FINISH: N/A			REV
				SCALE 1:1 WEIGHT
				SHEET 01 OF 01